



# INSTRUCTION BULLETIN

No. 340218  
Machine: 6200  
Published: 12-02  
Rev. 02

**NOTE: DO NOT DISCARD the Parts List from the Instruction Bulletin. Place the Parts List in the appropriate place in your machine manual for future reference. Retaining the Parts List will make it easier to reorder individual parts and will save you the cost of ordering an entire kit.**

*NOTE: Numbers in parenthesis ( ) are reference numbers for parts listed in Bill of Materials.*

Installation instructions for kit numbers 383945 (36VDC) and 383946 (12VDC).

## **SYNOPSIS / PROBLEM:**

This kit contains the parts needed to install a left hand side brush lift group and motor kit on the model 6200 sweeper.

Please follow step-by-step instructions.

## **SPECIAL TOOLS / CONSIDERATIONS: NONE**

(Estimated time to complete: 2 hours)

## **PREPARATION:**

(Refer to FIG. 1, 2 and 3)

**FOR SAFETY: Before leaving or servicing machine, stop on level surface and set parking brake. Then turn off machine and remove key.**

1. Disconnect battery cables from machine.



**WARNING: Always disconnect battery cables from machine before working on electrical components.**

2. Remove all front shroud mounting hardware and carefully separate the front shroud from the control panel. Set the front shroud and all mounting hardware aside.
3. Remove the circuit breaker panel and set it down in front of the operator's seat. Set the circuit breaker panel mounting hardware aside.
4. Lift the machine with a hoist or jacks. Block machine properly with jack stands or check that the hoist is carefully locked into position.

**FOR SAFETY: When servicing machine, block machine tires before jacking up machine.**

**FOR SAFETY: When servicing machine, jack up machine at designated locations only. Block machine up with jack stands.**

## **SIDE BRUSH MOTOR GROUP INSTALLATION:**

(Refer to FIG. 1, 2 and 3)

1. Mount the electric motor (13) to the side brush bracket (6) with four hex screws (7) and flat washers (8). (Refer to FIG. 1)
2. Mount the left hand side brush guard (20) over the side brush bracket (6) with five hex screws (7) and flat washers (8). (Refer to FIG. 1)

3. Press the two flange bearings (2), into the rear end of the side brush mounting channel (1). (Refer to FIG. 1)
4. Connect the front end of the side brush mounting channel (1) and the left hand lift cable (22) to the bracket and motor sub-assembly with the hex screw (10), die spring (9), and lock nut (5). (Refer to FIG. 1 and 2)

*NOTE: Check that the lift cable (22) is mounted on the right (nut) side of the mounting channel (1) and the die spring (9) is on the left side of the bracket (6) when mounted in the channel (1). (Refer to FIG. 1)*

5. Connect the side brush cable (3) to the back side of the side brush bracket (6) with hex screw (4) and lock nut (5). Tighten the hex screw (4) and lock nut (5) only hand tight, the side brush cable (3) must be able to move freely. (Refer to FIG. 1)
6. Place one clevis pin (14) in the side brush channel (1) and the second in the top of the side brush bracket (6). Connect the two clevis pins (14) with the extension spring (13). (Refer to FIG. 1)
7. Install the left hand brush assembly in the machine. Mount the side brush channel (1) to the frame with one clevis pin (16) and cotter pin (17). Mount the side brush cable (3) to the frame with the other clevis pin (16) and cotter pin (17). (Refer to FIG. 1)
8. Secure the side brush wiring harness back along the side brush cable (3) with wire ties.
9. Wire the brush motor into the main wiring harness.

#### **SIDE BRUSH LIFT GROUP INSTALLATION:**

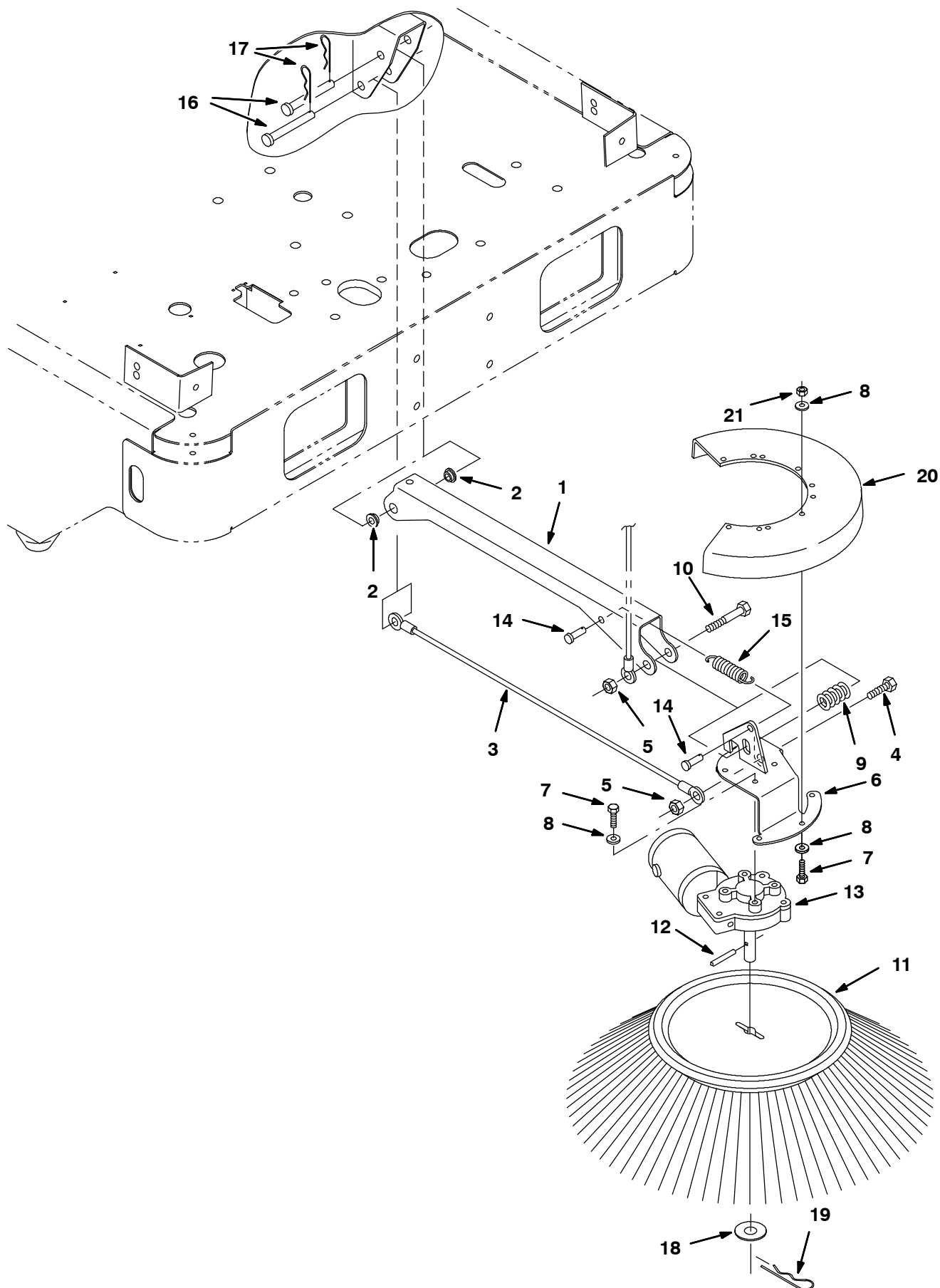
**(Refer to FIG. 1, 2 and 3)**

1. Guide the left hand side brush lift cable (22) up through the frame of the machine just in front of the left front corner brace. (Refer to FIG. 2)
2. Route the lift cable (22) up over the pulley (23). Secure the cable (22) and pulley (23) to the corner brace with one hex screw (27), angle piece (26), sleeve (24), and hex nut (28). Tighten the hardware finger tight. (Refer to FIG. 2)
3. Mount the side brush lift plate (29) in the left slot of the steering channel with a hex screw (30) and washer (31). Tighten the hardware finger tight. (Refer to FIG. 2)
4. Guide the lift cable (22) under the second pulley (23). Secure the lift cable (22) and pulley (23) to the steering channel with one hex screw (32), angle piece (26), sleeve (24), and hex nut (28). (Refer to FIG. 2)

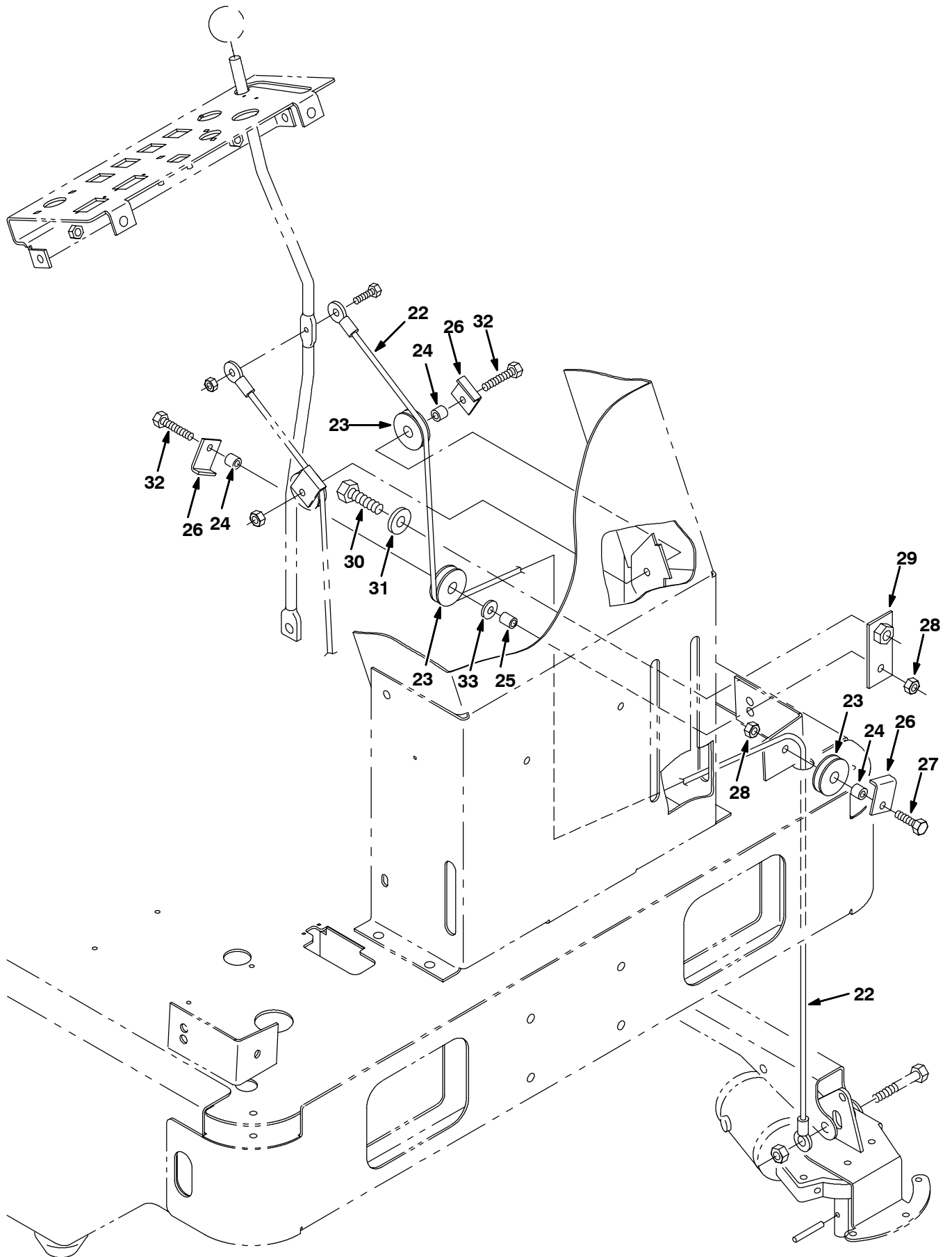
*NOTE: Guide the hex screw (32), through the angle piece (26), sleeve (24), and pulley (23). Continue through the steering channel and side brush lift plate (29). Secure the hex screw (32) with the hex nut (28) on the front side of the side brush lift plate.*

5. Guide the lift cable (22) over the third pulley (23). Secure the lift cable (22) and pulley to the top mounting bracket behind the steering channel with angle piece (26), spacer (24) and existing hardware. Tighten hardware finger tight. (Refer to FIG. 2)
6. Connect the end of the lift cable (22) to the side brush lift handle with already existing cable mounting hardware. (Refer to FIG. 2)
7. Lower the machine down off the jacks or hoist.
8. Check that the pin (12) is secure in the brush drive shaft. (Refer to FIG. 1)

9. Mount the side brush sweeping head (11) to the motor with a flat washer (18) and cotter pin (19). (Refer to FIG. 1)
10. Lower the side brush with the side brush handle. Adjust the side brush height by loosening and sliding the middle pulley up or down on the steering channel. Tighten the pulley when the side brush is in the preferred operating position.
11. Tighten the other two mounted pulleys with a wrench when the side brush height is adjusted.
12. Replace the circuit breaker panel, and secure with set aside mounting hardware.
13. Connect the battery cables to the machine. Turn the machine power on, and check the side brushes for proper operation.
14. Turn the machine power off. Replace the front shroud, and secure with the set aside mounting hardware.



**FIG. 1 - LEFT HAND SIDE BRUSH MOTOR GROUP INSTALLATION**



**FIG. 2 - LEFT HAND SIDE BRUSH LIFT GROUP INSTALLATION**

# **BILL OF MATERIALS FOR LEFT HAND SIDE BRUSH KIT 383945 (36VDC)**

<b>Ref.</b>	<b>TENNANT Part No.</b>	<b>Description</b>	<b>Qty.</b>
1	383533	Channel, mtg, sidebrush	1
2	15648	Bearing, flange	2
3	383513	Cable, brush, side	1
4	41345	Screw, hex, M12-1.75 X 25, 8.8	1
5	08711	Nut, hex, lock, M12-1.75, NI	2
6	81750	Bracket wldt, sidebrush	1
7	15678	Screw, hex, M06-1.0 X 16, SS	9
8	01684	Washer, flat, .25 SS	14
9	87242	Spring, die, .50, ID 1.00, OD 1.25	1
10	06972	Screw, hex, M12-1.75 X 60, 8.8	1
11	383753	Brush, disk, swp, 20.5 D	1
12	11516	Pin	1
13	81767	Motor, electric, 36VDC, LH	1
14	39019	Pin, clevis	2
15	15047	Spring, extension	1
16	06279	Pin, clevis	2
17	44906	Pin, hair cotter	2
18	04400	Washer, flat, M16, 17 X 30 X3 SS	1
19	02942	Pin, hair cotter	1
20	384049	Guard, brush, side	1
21	08712	Nut, hex, lock, M06-1.0, NI, SS	5
22	81785	Cable, sidebrush, lift, LH	1
23	369781	Pulley	3
24	222460	Sleeve	3
25	80395	Sleeve	1
26	54400	Angle	3
27	76570	Screw, hex, M08-1.25 X 30, 8.8	1
28	08709	Nut, hex, lock, M08-1.25, NI	2
29	81955	Plate, Sidebrush lift	1
30	06967	Screw, hex, M12 X 1.75, 20	1
31	32493	Washer, flat, .50 hard	1
32	06956	Screw, hex, M08-1.25 X 45, 8.8	2
33	32491	Washer, flat, .31, hard	1

**BILL OF MATERIALS FOR LEFT HAND SIDE BRUSH KIT 383946 (12VDC)**

<b>Ref.</b>	<b>TENNANT Part No.</b>	<b>Description</b>	<b>Qty.</b>
1	383533	Channel, mtg, sidebrush	1
2	15648	Bearing, flange	2
3	383513	Cable, brush, side	1
4	41345	Screw, hex, M12-1.75 X 25, 8.8	1
5	08711	Nut, hex, lock, M12-1.75, NI	2
6	81750	Bracket wldt, sidebrush	1
7	15678	Screw, hex, M06-1.0 X 16, SS	9
8	01684	Washer, flat, .25 SS	14
9	87242	Spring, die, .50, ID 1.00, OD 1.25	1
10	06972	Screw, hex, M12-1.75 X 60, 8.8	1
11	383753	Brush, disk, swp, 20.5 D	1
12	11516	Pin	1
13	379212	Motor, electric, 12VDC, LH	1
14	39019	Pin, clevis	2
15	15047	Spring, extension	1
16	06279	Pin, clevis	2
17	44906	Pin, hair cotter	2
18	04400	Washer, flat, M16, 17 X 30 X3 SS	1
19	02942	Pin, hair cotter	1
20	384049	Guard, brush, side	1
21	08712	Nut, hex, lock, M06-1.0, NI, SS	5
22	81785	Cable, sidebrush, lift, LH	1
23	74391	Pulley	3
24	222460	Sleeve	3
25	80395	Sleeve	1
26	54400	Angle	3
27	76570	Screw, hex, M08-1.25 X 30, 8.8	1
28	08709	Nut, hex, lock, M08-1.25, NI	2
29	81955	Plate, Sidebrush lift	1
30	06967	Screw, hex, M12 X 1.75, 20	1
31	32493	Washer, flat, .50 hard	1
32	06956	Screw, hex, M08-1.25 X 45, 8.8	2
33	32491	Washer, flat, .31, hard	1

TENNANT COMPANY  
P. O. Box 1452  
Minneapolis, MN 55440-1452